

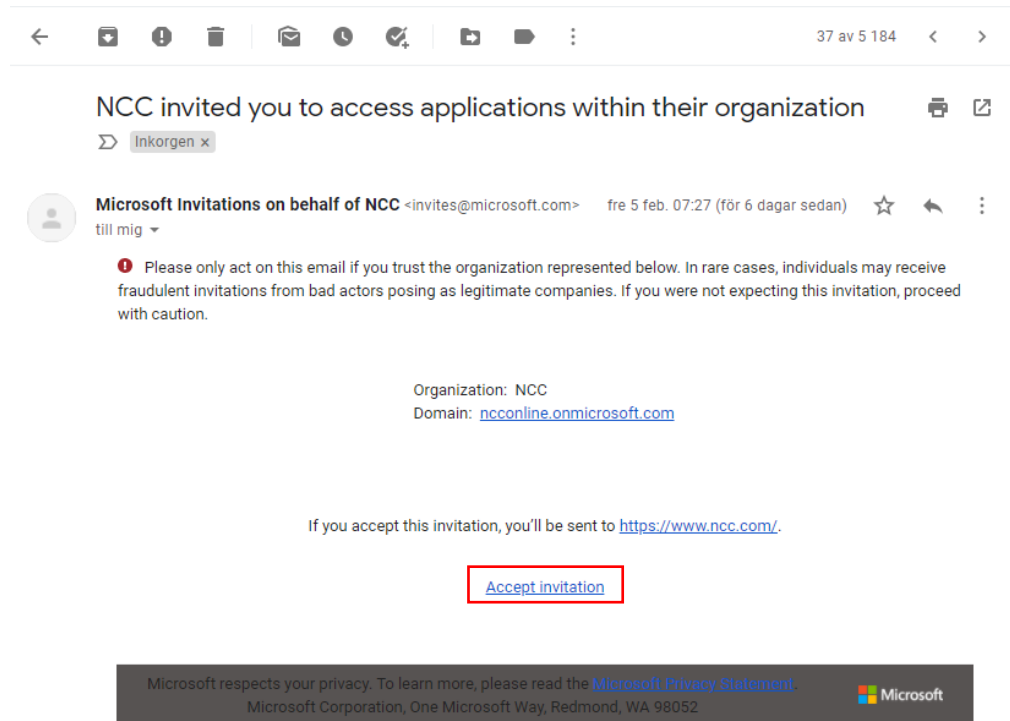
Login to NCC Supplier Portal

For you as a supplier/customer who does
NOT have a Microsoft account since before



Microsoft invitation from NCC

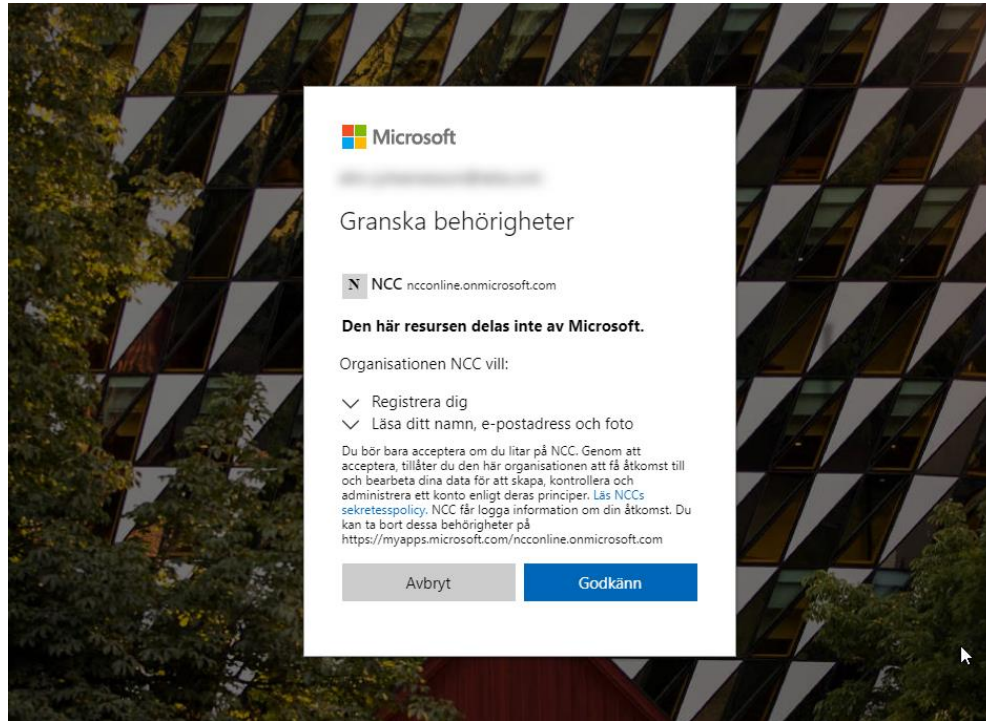
To get an invitation you must be registered in NCC's Supplier/project portal.



Separate invitation is sent to the email address set up in the system without a Microsoft account. Click "Accept invitation"

1. **Your e-mail account is not a Microsoft account:** Follow the instructions given by Microsoft and your e-mail provider in how to create a Microsoft account. Then proceed to instructions on the next page.
2. **Your e-mail account is already a Microsoft account:** Proceed to instructions on the next page.

Microsoft invitation from NCC



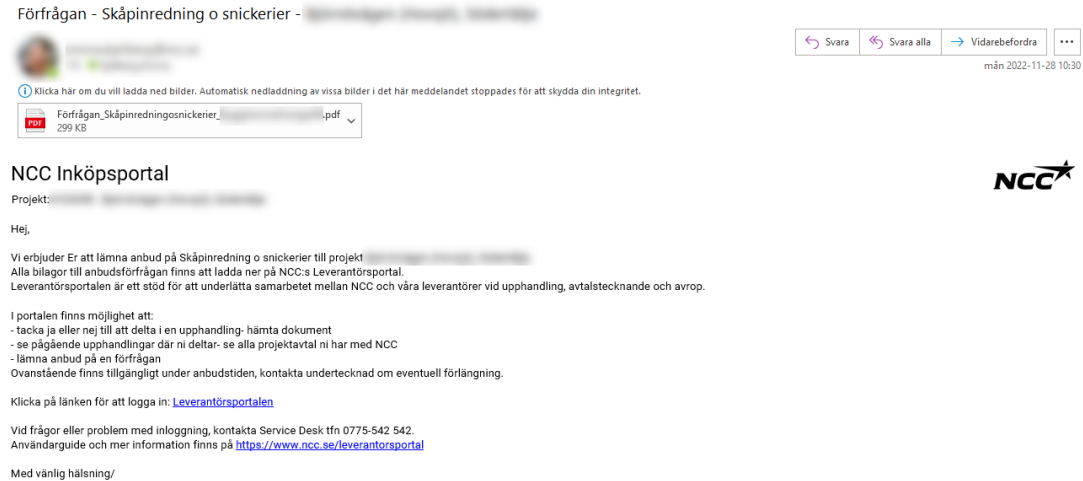
Give NCC permission to your information with "Accept". You will be redirected to NCC's website, enter supplier, project portal via email or website to get to the next step

After accepting the Microsoft invitation, the log-in will lead you to NCC Webpage.

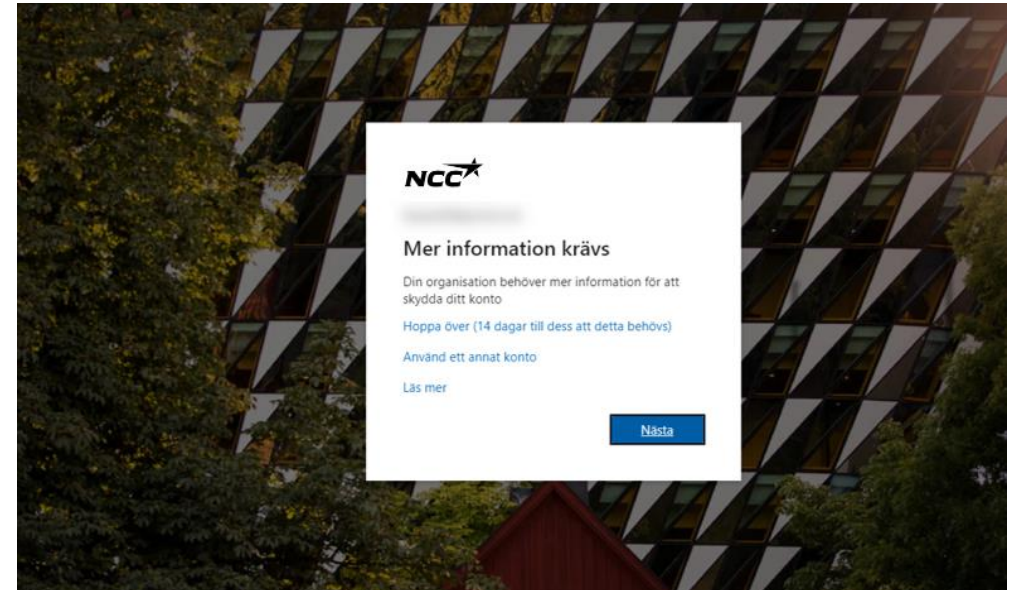
How do I access Delivery calendar, supplier & Project portal?

You can always access the [Delivery Calendar](#), [Supplier Portal](#) & [Project Portal](#) via [Ncc.com](#) or via the links sent in the email inquiry/invitation.

Configure NCC sign-in method

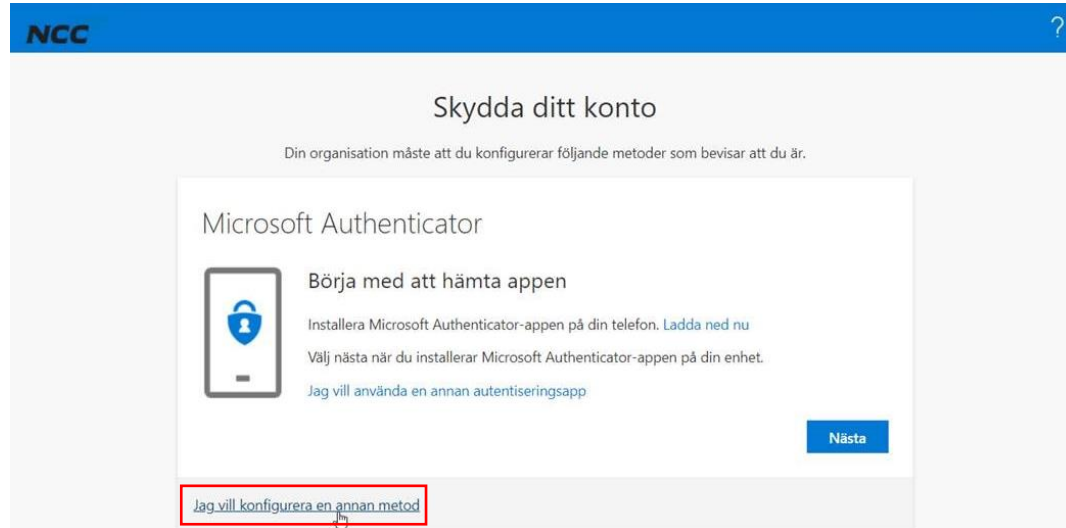


When entering Delivery Calendar, Project or Supplier portal via email, links or website you will be lead to configure your sign-in method

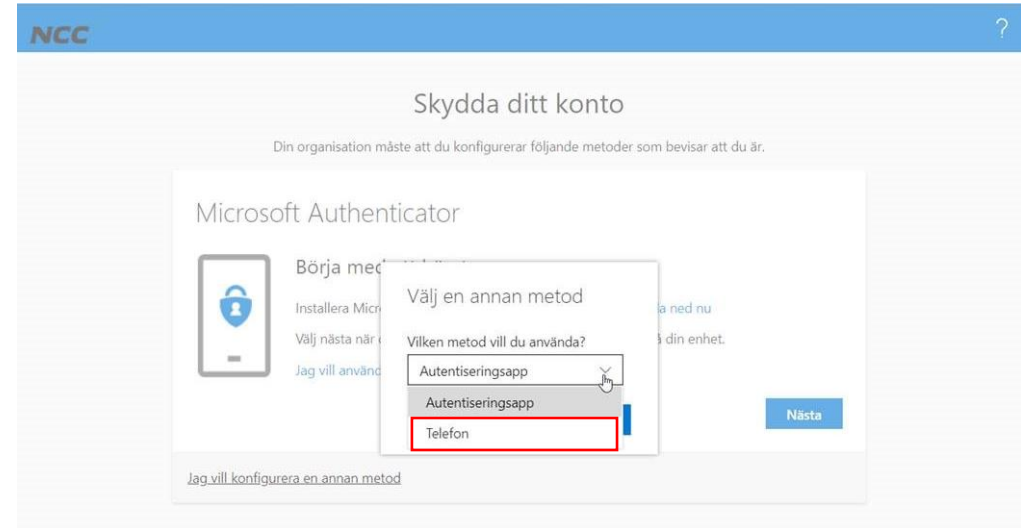


NCC uses two-way authentication, you need to configure this method when logging in for the first time.
To proceed with configuring your account, click "Next"

Configure sign-in method



We recommend that you select "I want to configure another method"



Then select "Phone"

Verify yourself using a code on your phone

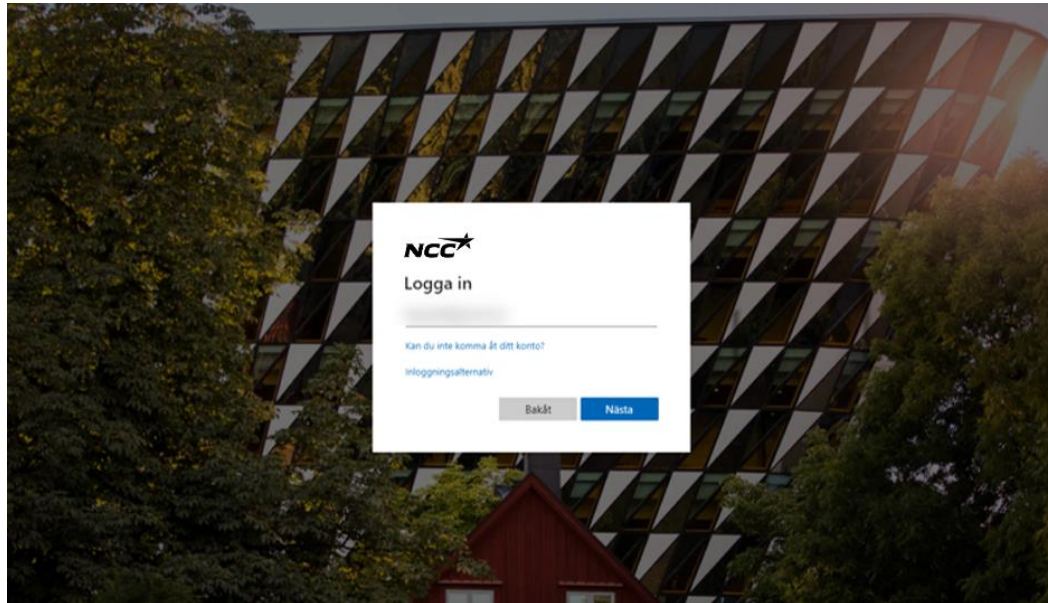
The screenshot shows the 'Skydda ditt konto' (Protect your account) page on the NCC website. The header is blue with the NCC logo and a question mark icon. The main heading is 'Skydda ditt konto' with a subtitle: 'Din organisation måste att du konfigurerar följande metoder som bevisar att du är.' Below this is a white box titled 'Telefon'. Inside the box, there is a paragraph: 'Du kan visa vem du är genom att besvara ett samtal på din telefon eller genom att skicka en kod via SMS till din telefon.' This is followed by the question 'Vilket telefonnummer vill du använda?' and a form with a dropdown menu set to 'Sverige (+46)' and a text input field containing '07058'. Below the form are two radio buttons: 'Sms: a mig en kod' (selected) and 'Ring mig'. At the bottom of the box is a blue 'Nästa' button and a link 'Jag vill konfigurera en annan metod'.

Enter your country and mobile number.
You will receive code via sms unless otherwise
selected

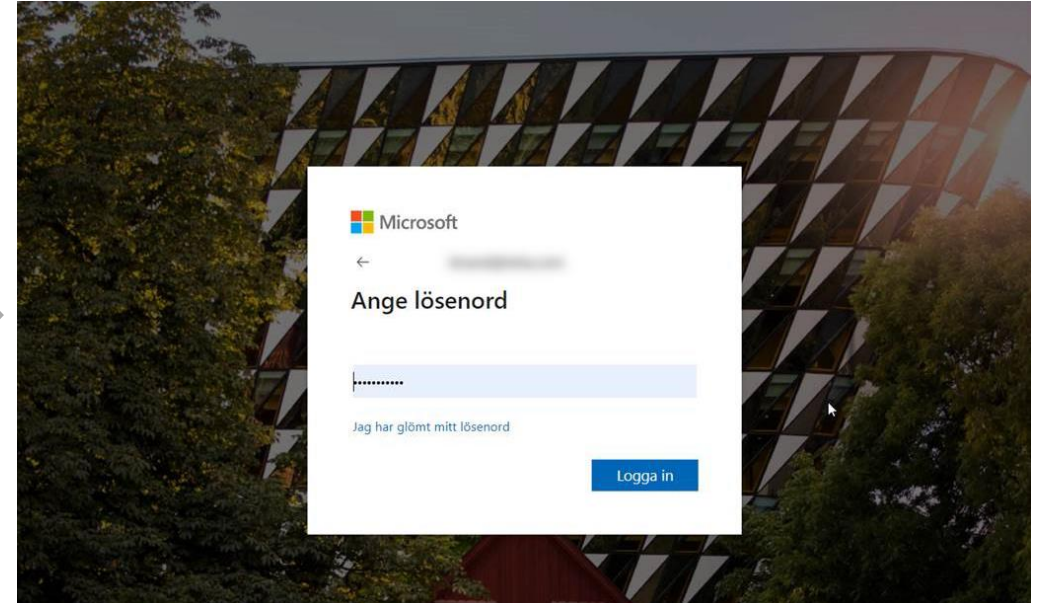
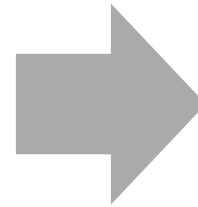
The screenshot shows the 'Skydda ditt konto' page on the NCC website. The header is blue with the NCC logo and a question mark icon. The main heading is 'Skydda ditt konto' with a subtitle: 'Din organisation måste att du konfigurerar följande metoder som bevisar att du är.' Below this is a white box titled 'Telefon'. Inside the box, there is a paragraph: 'Vi har precis skickat dig en 6-siffrig kod till +46 0705861760. Ange koden nedan.' This is followed by a text input field containing '848059'. Below the input field is a link 'Skicka om koden'. At the bottom right of the box are two buttons: 'Bakåt' and 'Nästa'. At the bottom left of the box is a link 'Jag vill konfigurera en annan metod'.

Enter the 6-digit code you received and click next. If you don't
get a code, you can send a new one by clicking "Resend the
code"

Sign in with your Microsoft account



Sign in with the email address you enabled through Microsoft account in previous steps



Enter the password you've associated with your Microsoft account

All set!

- Now you are inside NCC Portal e.g. Supplier Portal
- Next time, easily sign in directly with your Microsoft account
- You can access the portal as usual via the links in your e-mail or on NCC's website

NCC | Supplier Portal

Home Company settings Support

Efficient purchase by direct communication

Welcome to the NCC's supplier portal. By supporting our purchaser's ability to communicate with you as a supplier, we hope to simplify everyday life for all parties.

The Supplier Portal provides support for buyers and suppliers during inquiries, agreements signing and orders. All documentation is available to you via the portal.

In this portal, you can easily:

- See all ongoing inquiries and project agreements with NCC
- Download all attachments connected to Inquiries, Agreements & Orders
- Accept, decline or give a tender on an inquiry
- Check and correct your company's contact information

Support

[User Manual \(pdf\)](#)

Servicedesk@ncc.se

Additional supplier information

[Read more here](#)

