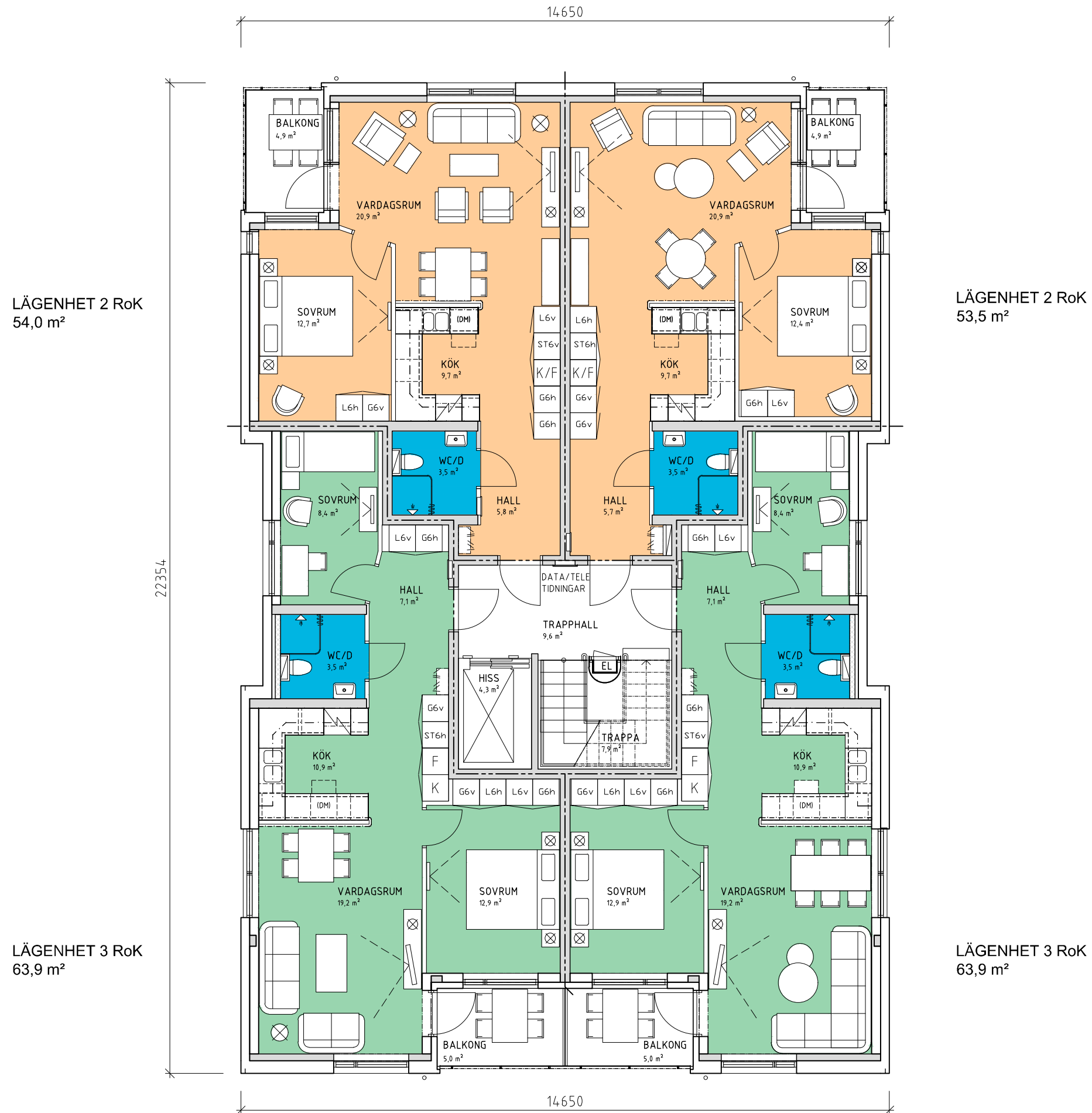


# NCC Folkboende 4300

Version 2.3



LÄGENHET 2 RoK  
54,0 m<sup>2</sup>

LÄGENHET 2 RoK  
53,5 m<sup>2</sup>

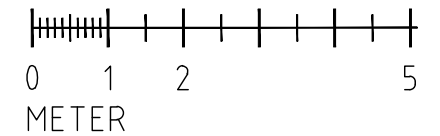
LÄGENHET 3 RoK  
63,9 m<sup>2</sup>

LÄGENHET 3 RoK  
63,9 m<sup>2</sup>

## Ytuppgifter

- BTA - 300,0 m<sup>2</sup>
- BOA - 235,3 m<sup>2</sup>
- BRA - 257,5 m<sup>2</sup>
- BYA - 320,0 m<sup>2</sup>
- Nyttjandegrad: 78,4 %

SKALA 1:100



# NCC Folkboende 4337

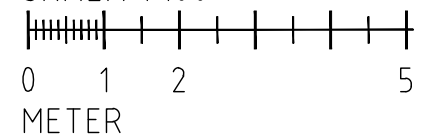
Version 2.3



## Ytuppgifter

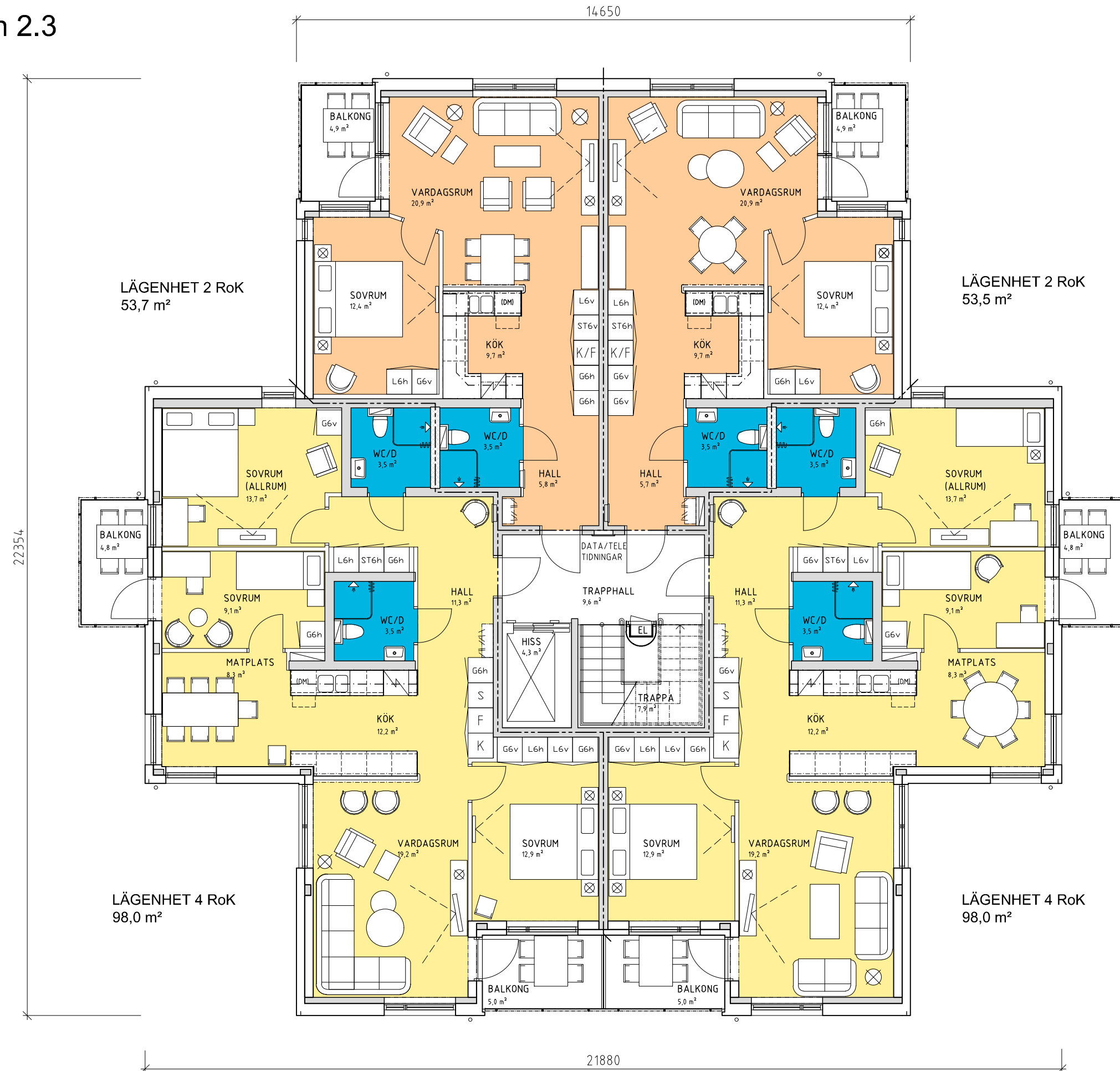
- BTA - 336,6 m<sup>2</sup>
- BOA - 269,4 m<sup>2</sup>
- BRA - 291,6 m<sup>2</sup>
- BYA - 361,4 m<sup>2</sup>
- Nyttjandegrad: 80,0 %

SKALA 1:100



# NCC Folkboende 4373

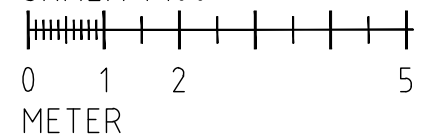
Version 2.3



## Ytuppgifter

BTA - 373,3 m<sup>2</sup>  
BOA - 303,2 m<sup>2</sup>  
BRA - 325,4 m<sup>2</sup>  
BYA - 402,9 m<sup>2</sup>  
Nyttjandegrad: 81,2 %

SKALA 1:100



# NCC Folkboende 5328

Version 2.3



# NCC Folkboende 5337

Version 2.3



# NCC Folkboende 5359

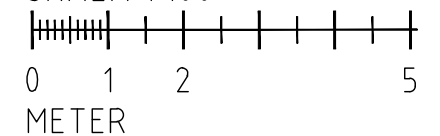
Version 2.3



## Ytuppgifter

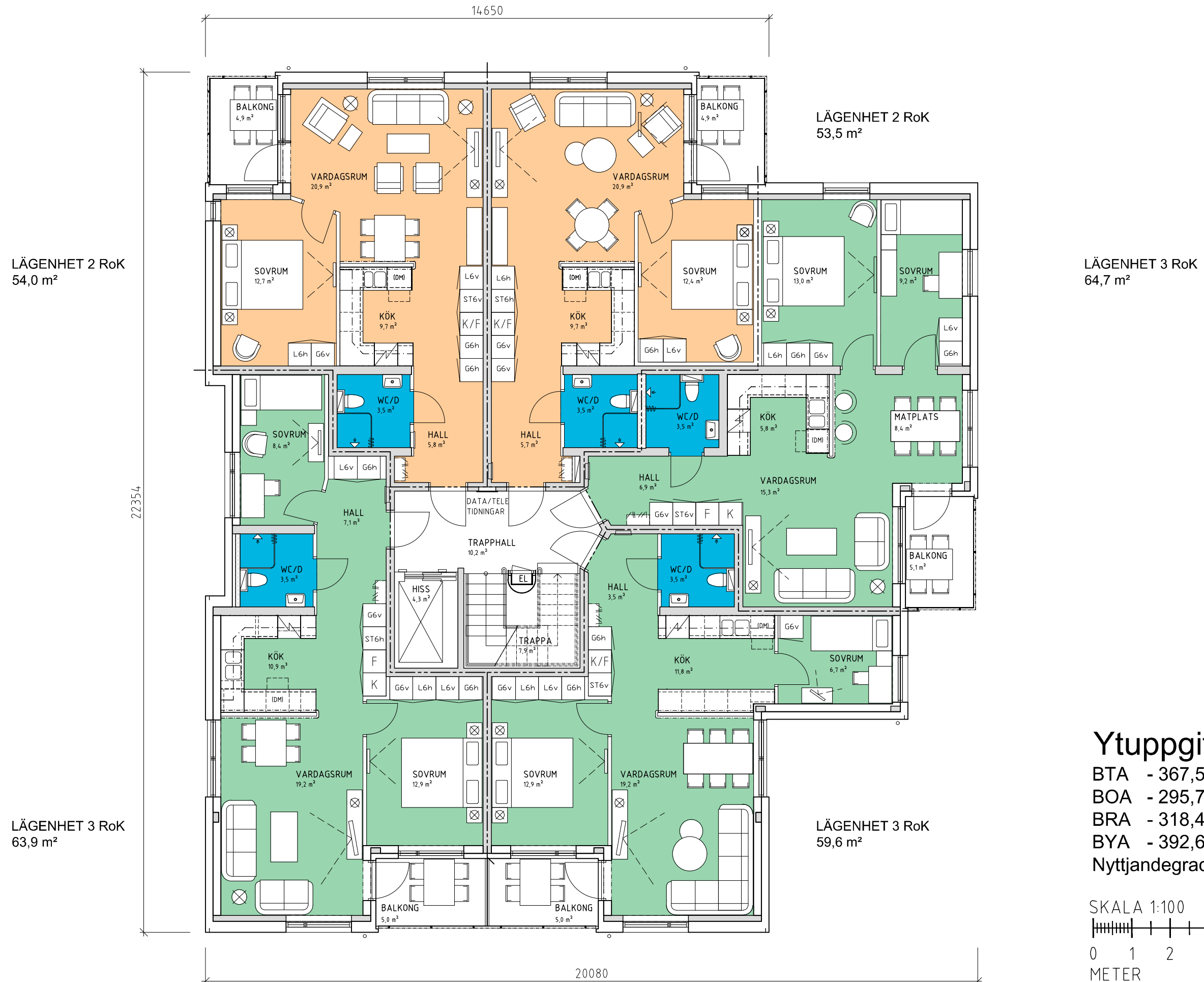
- BTA - 359,4 m<sup>2</sup>
- BOA - 287,5 m<sup>2</sup>
- BRA - 310,2 m<sup>2</sup>
- BYA - 384,5 m<sup>2</sup>
- Nyttjandegrad: 80,0 %

SKALA 1:100



# NCC Folkboende 5368

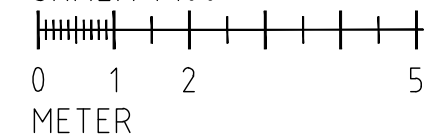
Version 2.3



## Ytuppgifter

- BTA - 367,5 m<sup>2</sup>
- BOA - 295,7 m<sup>2</sup>
- BRA - 318,4 m<sup>2</sup>
- BYA - 392,6 m<sup>2</sup>
- Nyttjandegrad: 80,5 %

SKALA 1:100





# NCC Folkboende 5404

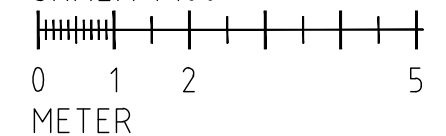
Version 2.3



## Ytuppgifter

- BTA - 404,3 m<sup>2</sup>
- BOA - 329,5 m<sup>2</sup>
- BRA - 352,2 m<sup>2</sup>
- BYA - 434,2 m<sup>2</sup>
- Nyttjandegrad: 81,5 %

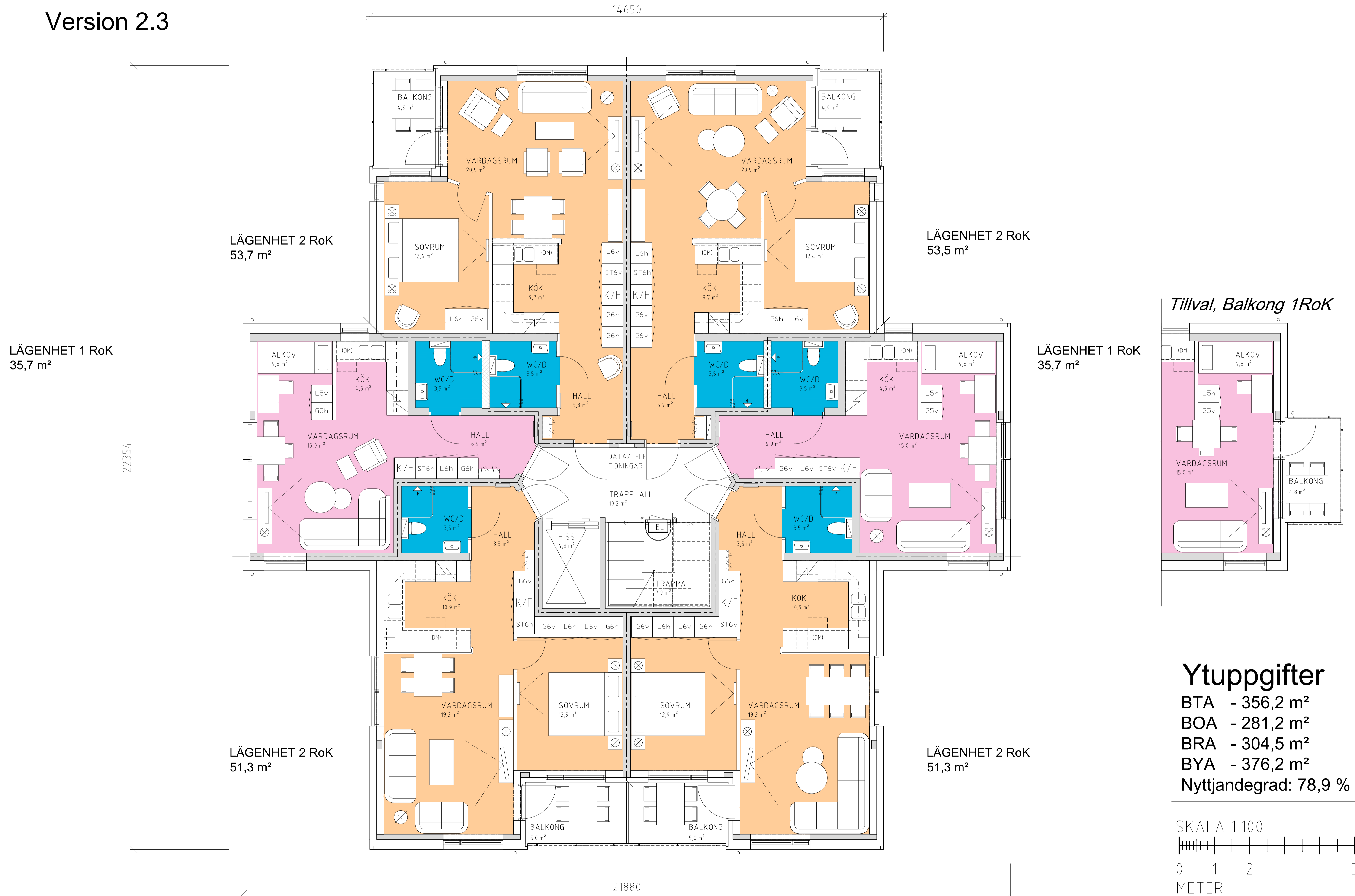
SKALA 1:100





# NCC Folkboende 6356

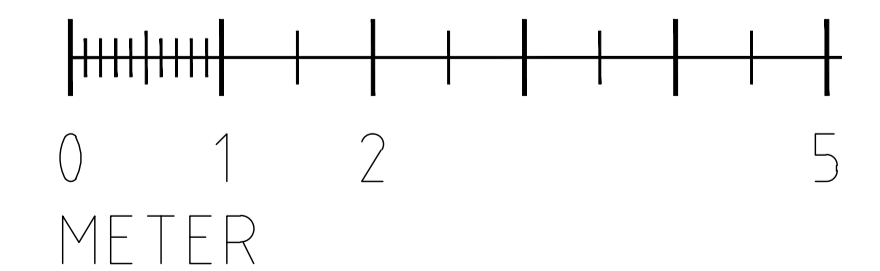
Version 2.3



## Ytuppgifter

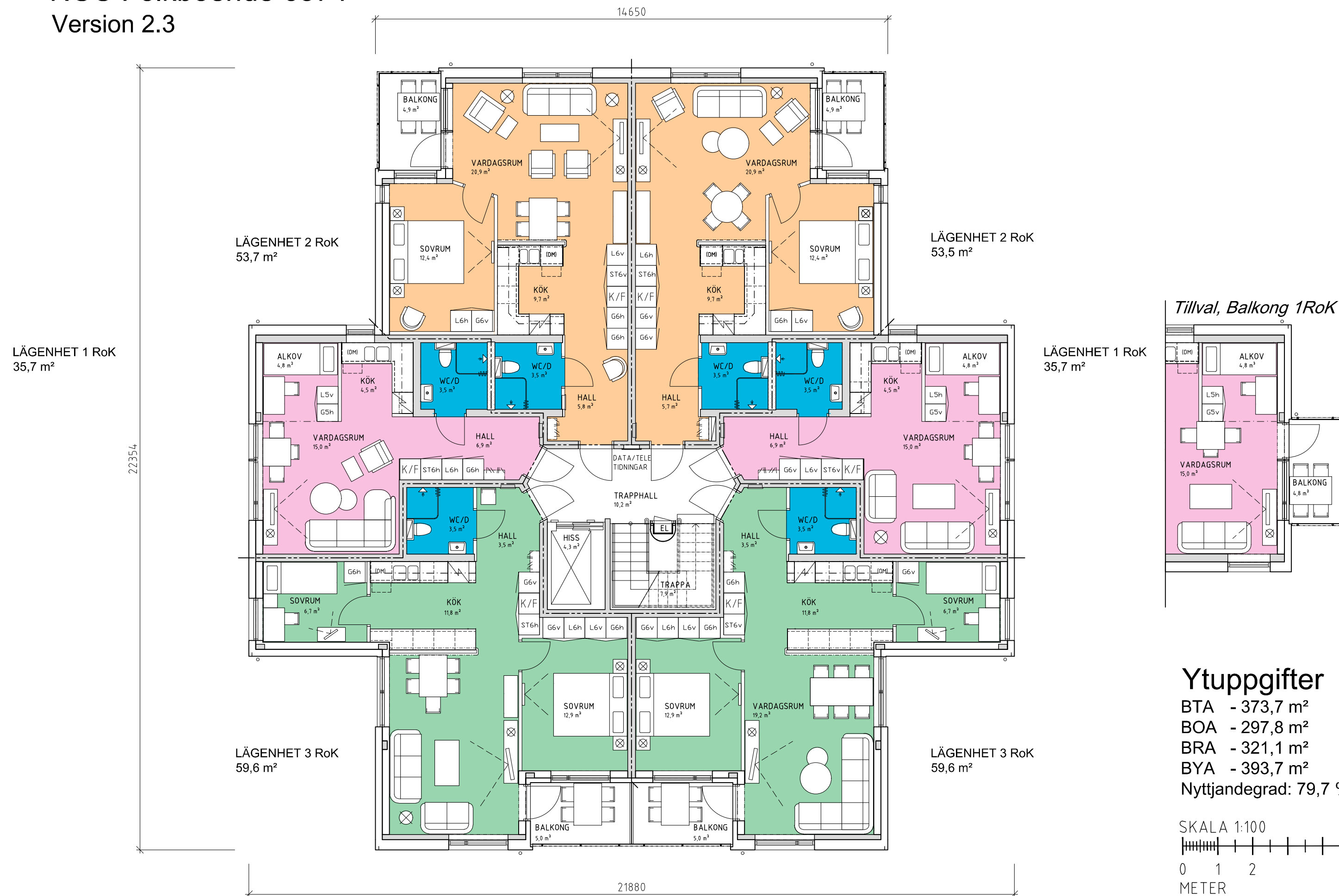
- BTA - 356,2 m<sup>2</sup>
- BOA - 281,2 m<sup>2</sup>
- BRA - 304,5 m<sup>2</sup>
- BYA - 376,2 m<sup>2</sup>
- Nyttjandegrad: 78,9 %

SKALA 1:100



# NCC Folkboende 6374

Version 2.3

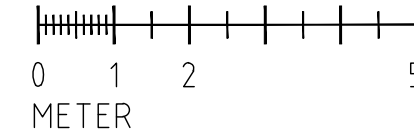


Tillval, Balkong 1RoK

## Ytuppgifter

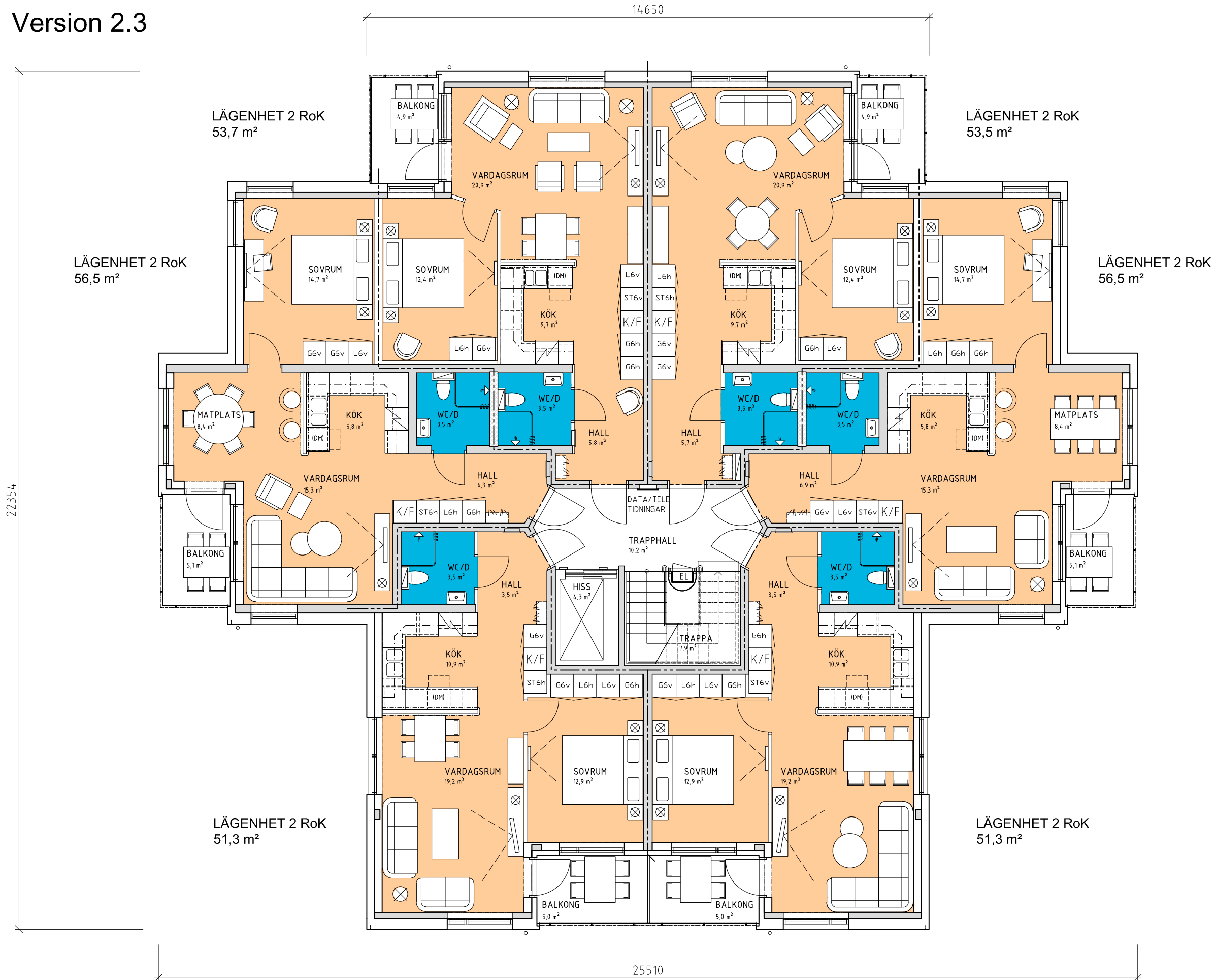
- BTA - 373,7 m<sup>2</sup>
- BOA - 297,8 m<sup>2</sup>
- BRA - 321,1 m<sup>2</sup>
- BYA - 393,7 m<sup>2</sup>
- Nyttjandegrad: 79,7 %

SKALA 1:100



# NCC Folkboende 6402

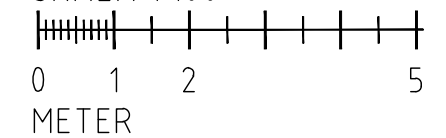
Version 2.3



## Ytuppgifter

BTA - 401,6 m<sup>2</sup>  
 BOA - 322,8 m<sup>2</sup>  
 BRA - 346,1 m<sup>2</sup>  
 BYA - 431,8 m<sup>2</sup>  
 Nyttjandegrad: 80,4 %

SKALA 1:100

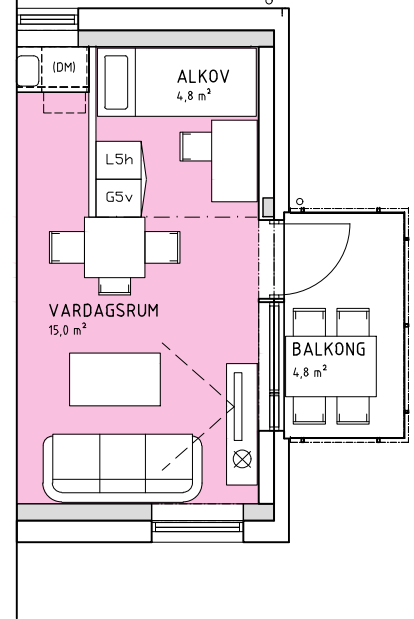


# NCC Folkboende 6405

## Version 2.3



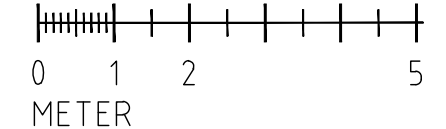
*Tillval, Balkong 1RoK*



### Ytuppgifter

- BTA - 404,5 m<sup>2</sup>
- BOA - 327,1 m<sup>2</sup>
- BRA - 350,4 m<sup>2</sup>
- BYA - 429,6 m<sup>2</sup>
- Nyttjandegrad: 80,9 %

SKALA 1:100



# NCC Folkboende 6418

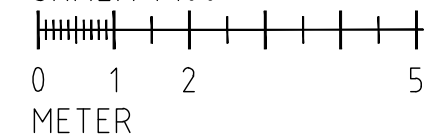
Version 2.3



## Ytuppgifter

- BTA - 417,8 m<sup>2</sup>
- BOA - 339,2 m<sup>2</sup>
- BRA - 362,5 m<sup>2</sup>
- BYA - 448,0 m<sup>2</sup>
- Nyttjandegrad: 81,2 %

SKALA 1:100





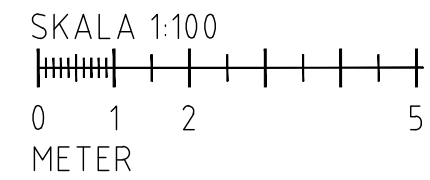
# NCC Folkboende 6426

Version 2.3



## Ytuppgifter

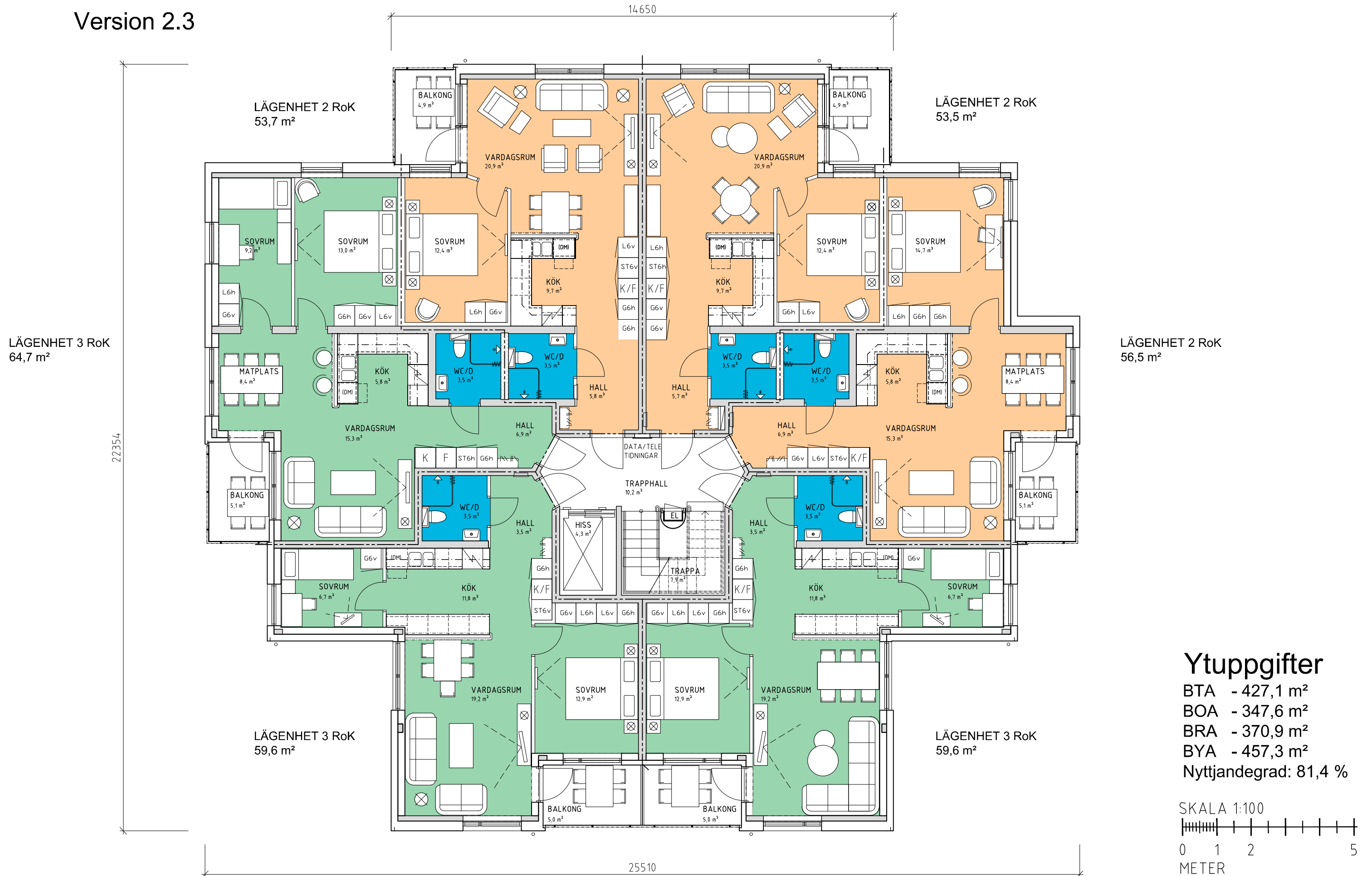
- BTA - 426,5 m<sup>2</sup>
- BOA - 347,8 m<sup>2</sup>
- BRA - 371,1 m<sup>2</sup>
- BYA - 456,7 m<sup>2</sup>
- Nyttjandegrad: 81,5 %





# NCC Folkboende 6427

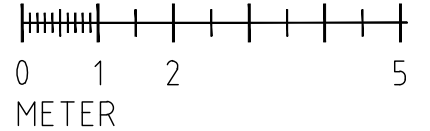
Version 2.3



## Ytuppgifter

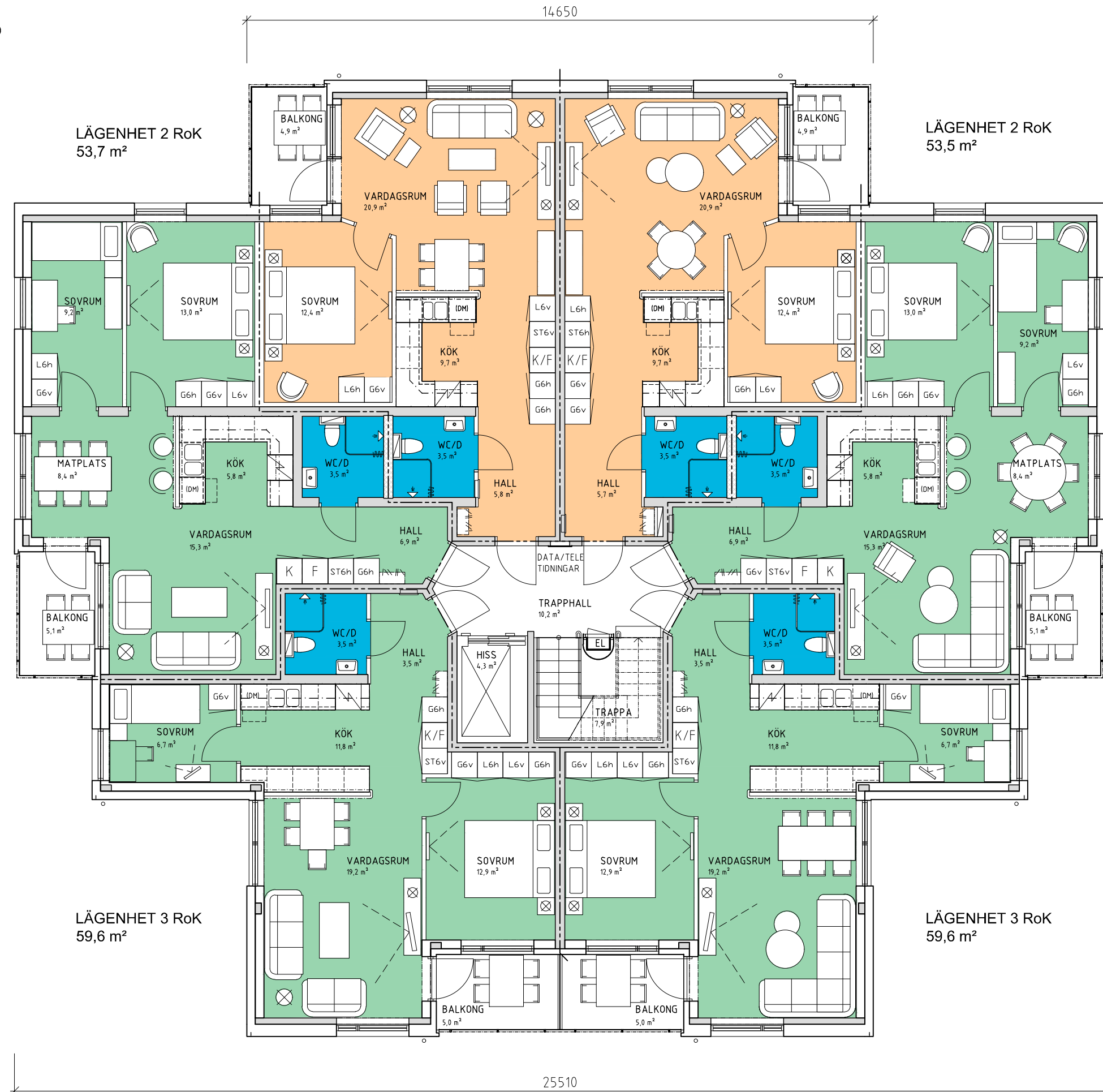
- BTA - 427,1 m<sup>2</sup>
- BOA - 347,6 m<sup>2</sup>
- BRA - 370,9 m<sup>2</sup>
- BYA - 457,3 m<sup>2</sup>
- Nyttjandegrad: 81,4 %

SKALA 1:100



# NCC Folkboende 6435

Version 2.3



## Ytuppgifter

- BTA - 435,3 m²
- BOA - 355,8 m²
- BRA - 379,1 m²
- BYA - 465,5 m²
- Nyttjandegrad: 81,7 %

SKALA 1:100

